



Beyond A Throwaway Culture:

Finding Good Eco-Questions
for our Faith Communities

Saturday, February 29th 2020

Welcome

10am	Welcome	
	Prayer Moment	<i>Brenda Farrell</i>
10:40	Reality Bites	<i>Dr Eoin O'Mahony</i>
11:00	Our Common Home: Looking at the connections	<i>Dr Ciara Murphy</i>
12:00	Stretch break	
12:10	Sharing the Story	
1:00	Lunch	
2:00	Resources and ideas	<i>Frank Greally, Nadine Cunningham, Brenda Farrell</i>
3:30	Bringing it all together	
4:15	Prayer Moment	

Handouts by email after the event.

Wifi code 3sndbcgm (Eir2352008 2.4 and 5G)





Beyond A Throwaway Culture:

Finding Good Eco-Questions
for our Faith Communities

Saturday, February 29th 2020



‘Whoever benefits from the world without first blessing God
is as if they robbed God or violated God’s property.’

Let us bless God, to acknowledge that nothing in nature is to be taken for granted.
Blessed are you O God, maker of heaven and earth, giver of all good things.

All: Creation sings your praises



Blessed are you O Christ, Son of God eternal
Bringer of good news to the poor.

All: Creation cries out for your justice

Blessed are you O Holy Spirit, Giver of life and
renewal, Uniting us in worship and service.

All: Creation longs for your wisdom.



Let remember that creation belongs to God and let
us see the Earth and all its creatures as
our neighbour-a vulnerable neighbour that we
as humans have a unique responsibility to cherish
and protect and enrich -
let us remember that responsibility



We remember the words of Philip Larkins who writes:

What are days for Days are where we live,
They come, they wake us
Time and time over
They are to be happy in
Let us be thankful for this extra day to be happy in





Beyond A Throwaway Culture:

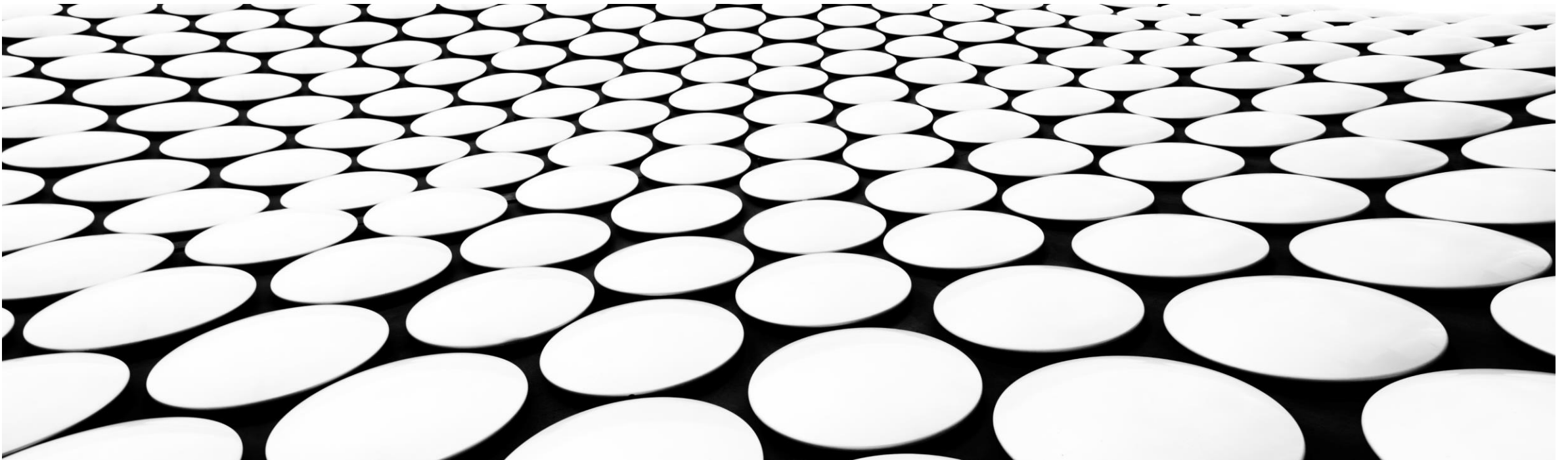
Finding Good Eco-Questions
for our Faith Communities

Saturday, February 29th 2020

Warming planet: “cool off there buddy”

Wealth and ignoring the 2 degree threshold

Contribution from
Eoin O'Mahony,
Geographer UCD.
Slides sent to
participants



How we can Understand climate justice as spatial

- Location matters: near things are more related than far things
- Green space does not mean a better environment
- Climate justice is not a totality
- Spatial justice means asking hard questions about resource management



Beyond A Throwaway Culture:

Finding Good Eco-Questions
for our Faith Communities

Saturday, February 29th 2020

*Question for all:
What is the quality of life
of your parishioners?*





Beyond A Throwaway Culture:

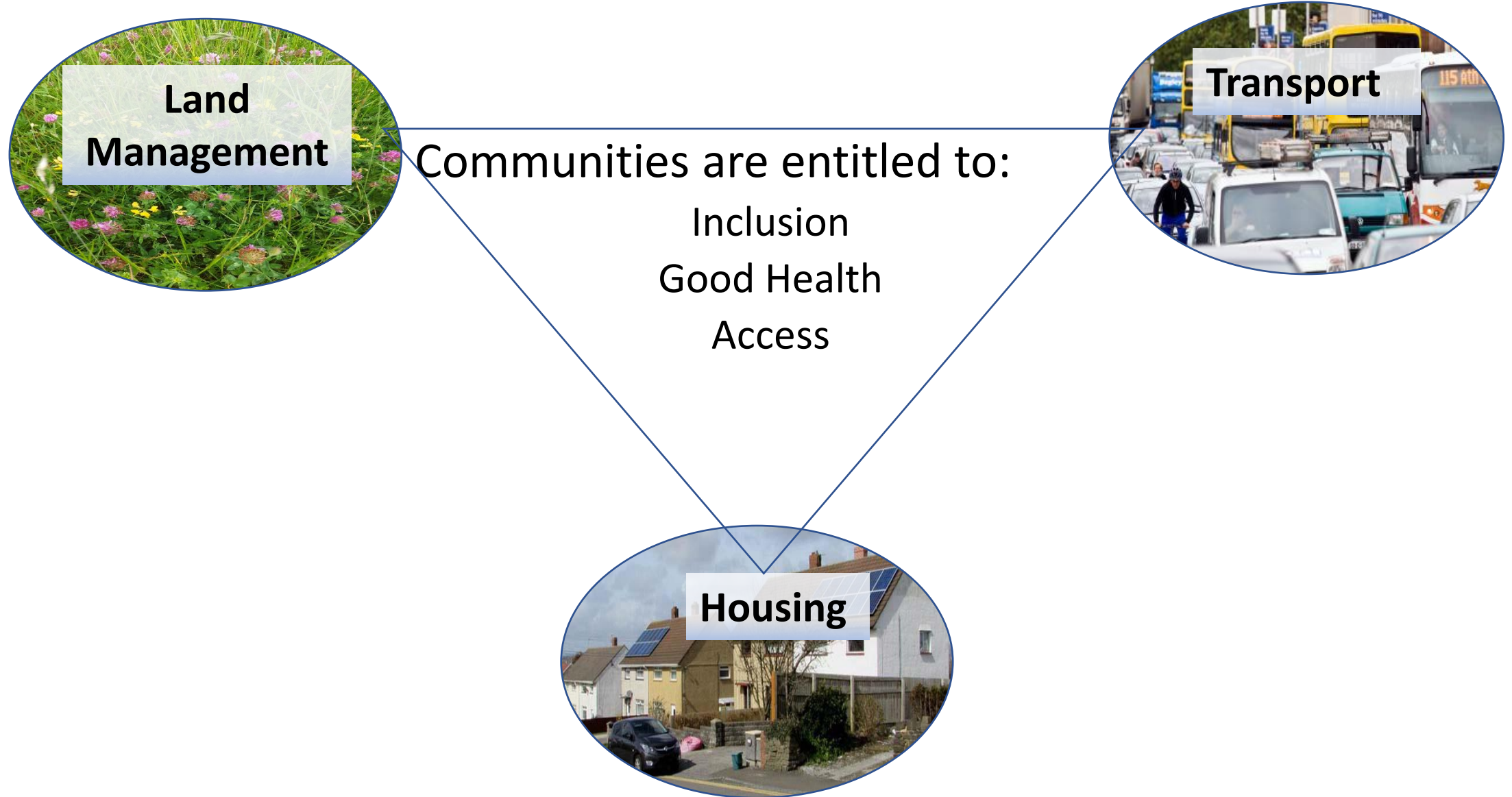
Finding Good Eco-Questions
for our Faith Communities

Saturday, February 29th 2020

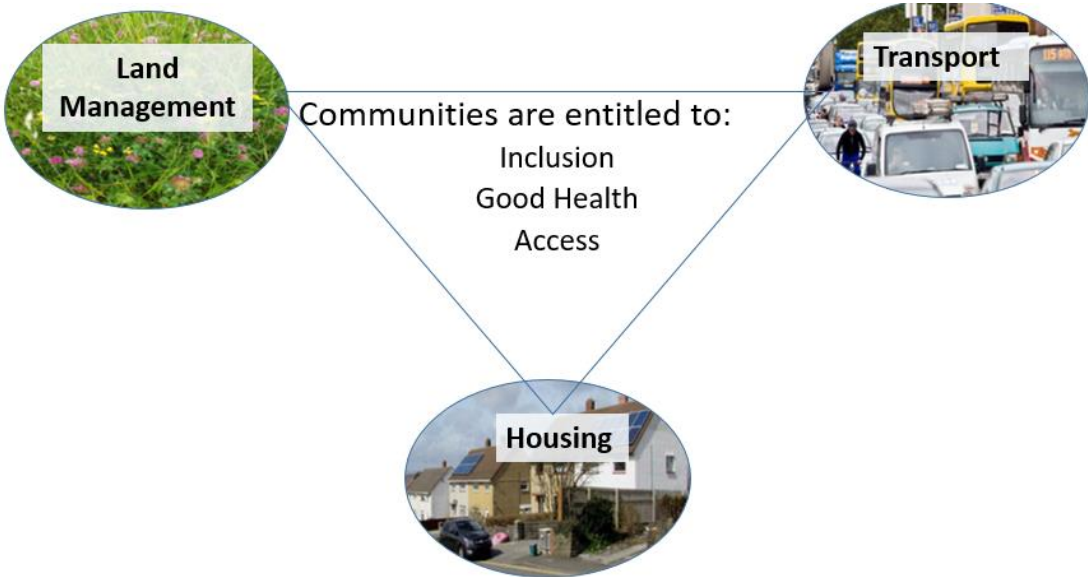
Our Common Home – Looking at the connections

Jesuit Centre for Faith and Justice
54-72 Gardiner Street Upper, Dublin 1

Quality of life:



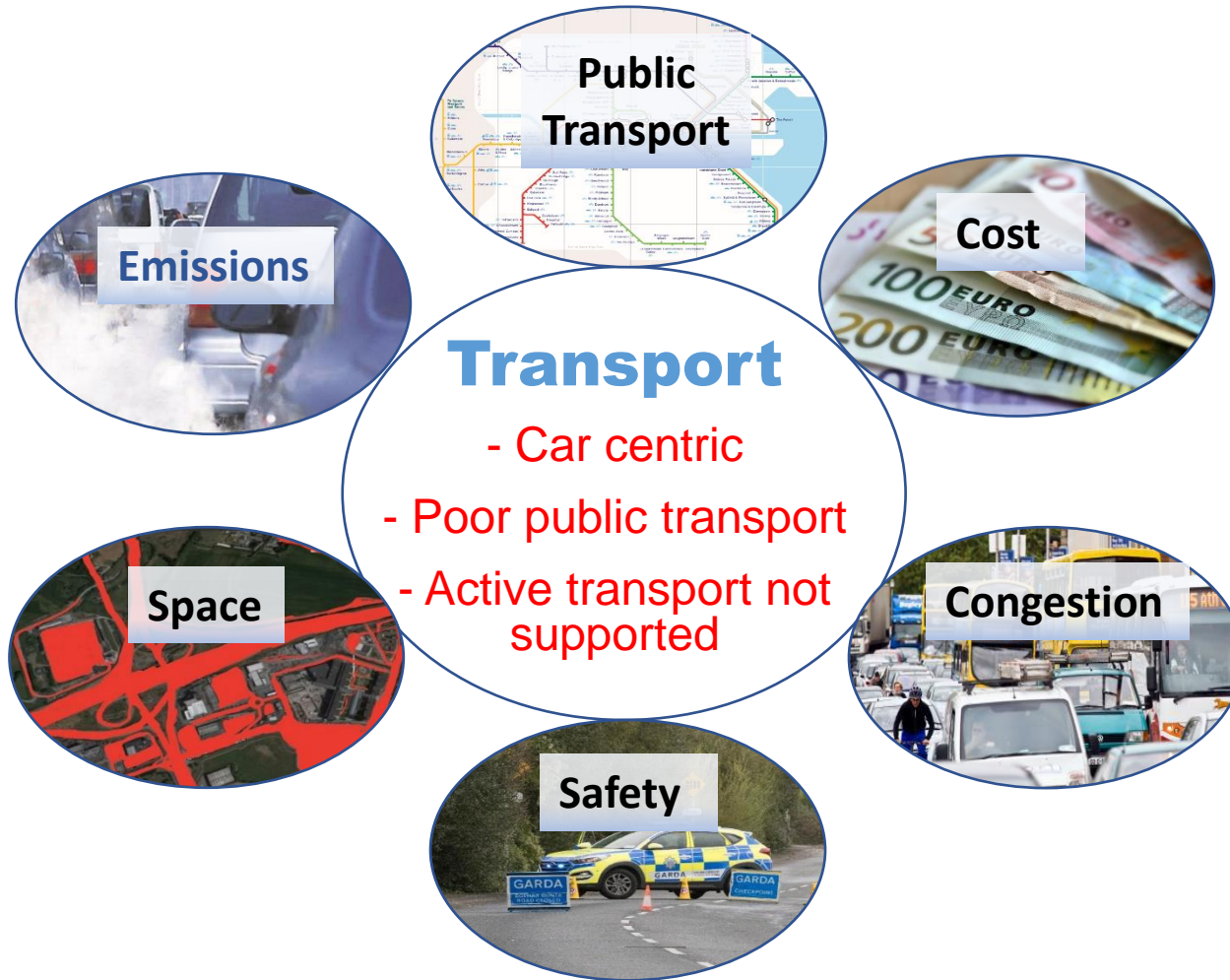
Quality of life:



We are faced not with two separate crises, one environmental and the other social, but rather with one complex crisis which is both social and environmental. Strategies for a solution demand an integrated approach to combating poverty, restoring dignity to the excluded, and at the same time protecting nature. (LS139)



Connections:





 **Air pollution**

 **CO₂**

Lung, heart & brain disease

Climate Change

 **Hospital waiting lists**

 **Medical Costs**



Urban 'Living space'

Severance

**Competition for space
eg housing**

Contributes to social isolation



Urban sprawl



Lack of safe active infrastructure

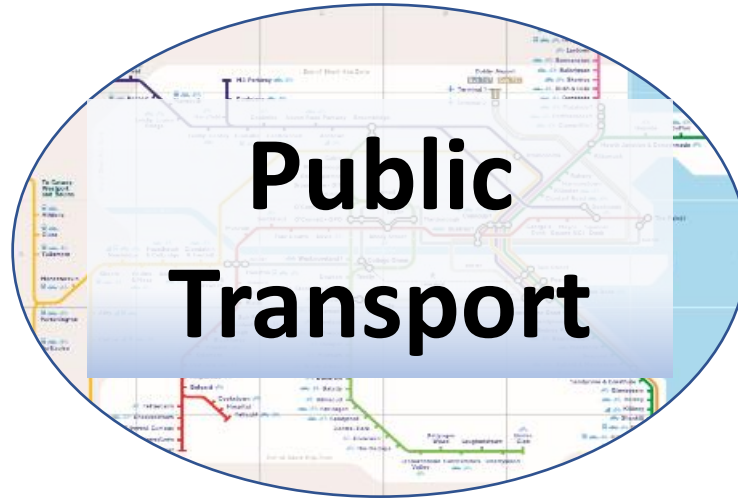
Traffic accidents

Low numbers walking & cycling



Transport Poverty

147 fatalities in 2019



Access

Connectivity / Reliability issues

Car dependence

Transport Poverty

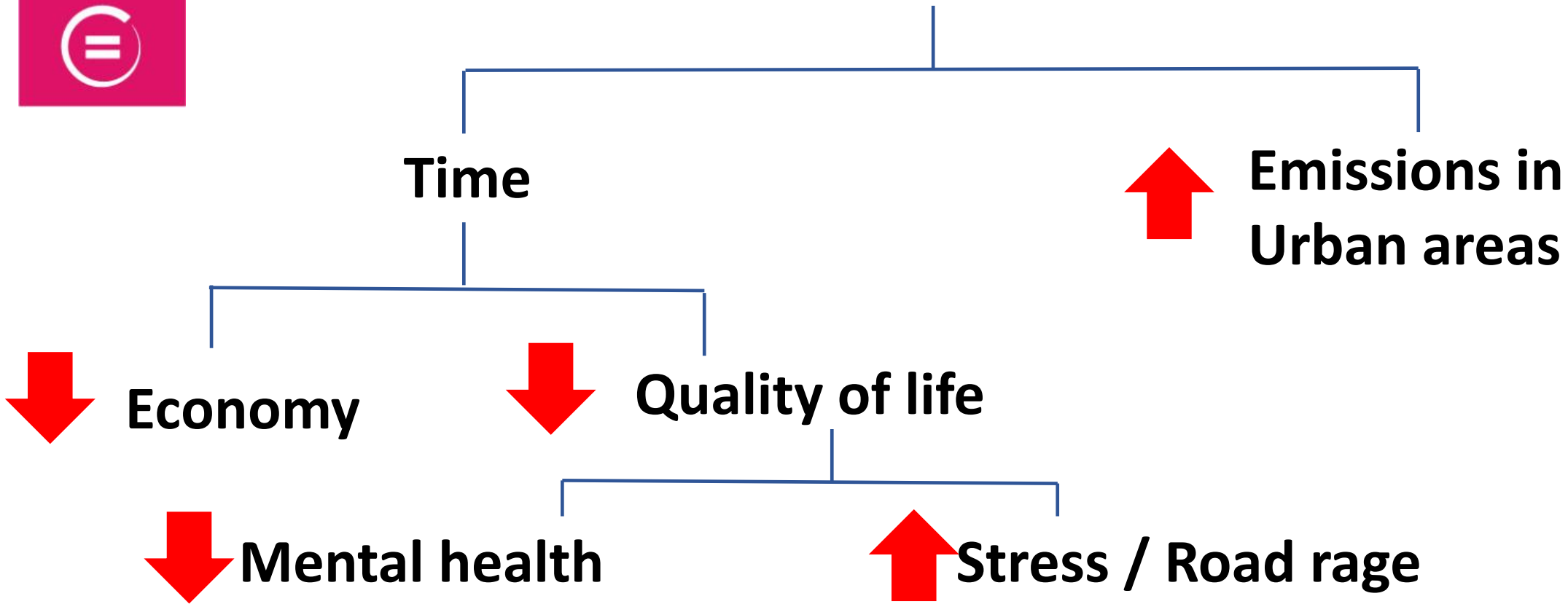
3GOOD HEALTH
AND WELL-BEING

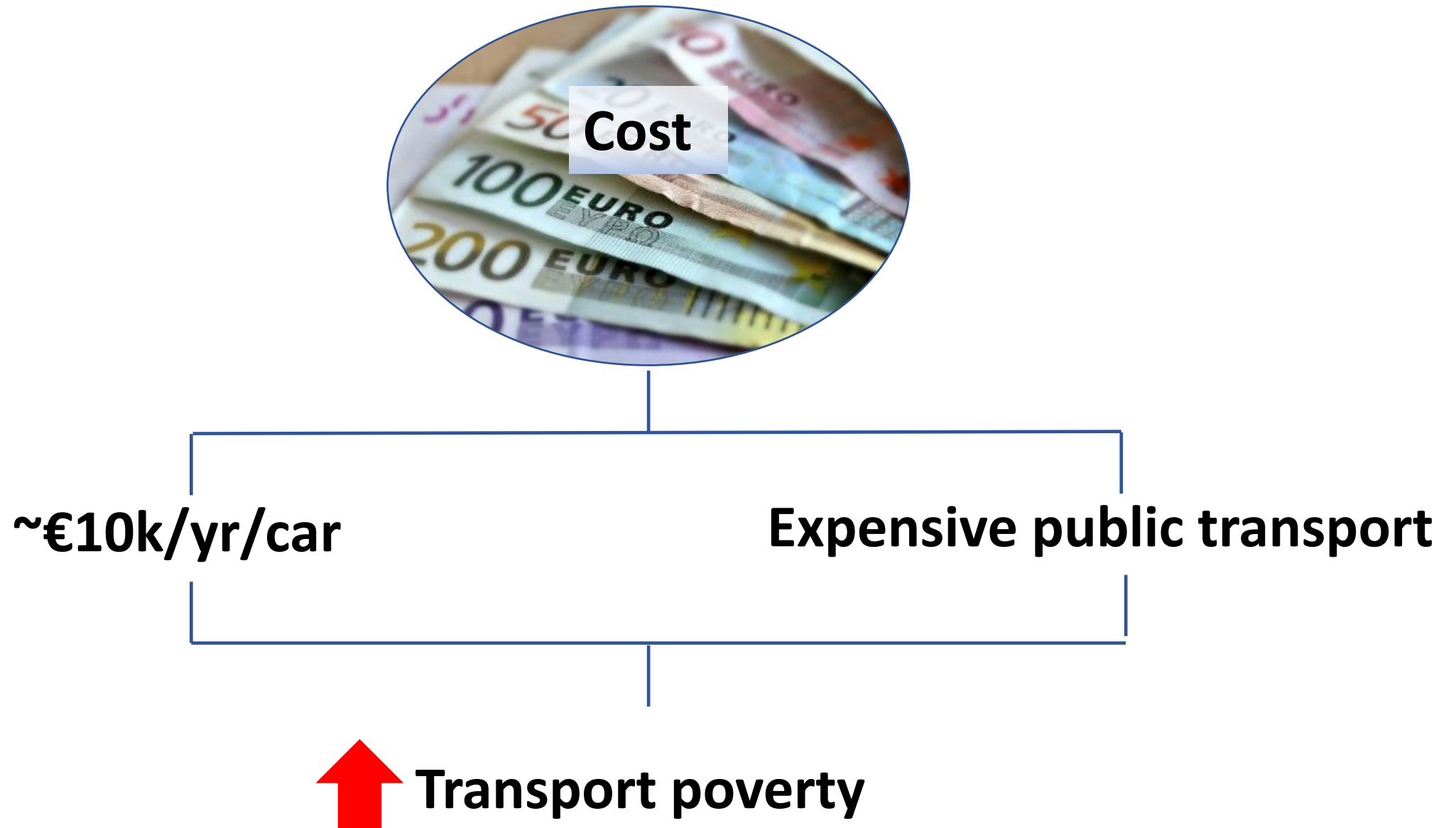
8DECENT WORK AND
ECONOMIC GROWTH

10REDUCED
INEQUALITIES



Congestion





Connections:





Impacts:

- **Food**
 - Local produce
 - Grow your own
- **Health**
 - Exercise
 - mental health
 - connection with nature
- **Services**
 - flood control
 - Shade / shelter
 - drinking water
 - air quality

It is not enough to think of different species merely as potential 'resources' to be exploited, while overlooking the fact that they have value in themselves. LS32

Connections:





Impacts:

- **Energy poverty**
 - Heating costs
 - Housing quality
- **Health**
 - Cold/ Damp housing
 - Air quality
- **Inclusion**
 - Community
- **Access**
 - Green space
 - Transport
 - services

Having a home has much to do with a sense of personal dignity and the growth of families. (LS152)



Beyond A Throwaway Culture:

Finding Good Eco-Questions
for our Faith Communities

Saturday, February 29th 2020

"Human beings too are creatures of this world, enjoying a right to life and happiness and endowed with unique dignity.

So, we cannot fail to consider the effects on people's lives of environmental deterioration, current models of development and the throwaway culture."
(LS 43)



A certain way of understanding human life and activity has gone awry, to the serious detriment of the world around us.

Should we not pause and consider this?

There is a tendency to believe that every increase in power means “an increase of ‘progress’ itself”, an advance in “security, usefulness, welfare and vigour;
...

The fact is that “contemporary man has not been trained to use power well”, because our immense technological development has not been accompanied by a development in human responsibility, values and conscience. (LS 101)



***There is also the fact that people
no longer seem to believe in a
happy future;***

they no longer have blind trust in a better tomorrow based on the present state of the world and our technical abilities.

There is a growing awareness that scientific and technological progress cannot be equated with the progress of humanity and history, a growing sense that the way to a better future lies elsewhere.

This is not to reject the possibilities which technology continues to offer us.

But humanity has changed profoundly, and the accumulation of constant novelties exalts a superficiality which pulls us in one direction.

***It becomes difficult to pause and
recover depth in life. (LS 113)***



The human environment and the natural environment deteriorate together; we cannot adequately combat environmental degradation unless we attend to causes related to human and social degradation.

...

These days, they (the poorest people) are mentioned in international political and economic discussions, but one often has the impression that their problems are brought up as an afterthought, ... when all is said and done, they frequently remain at the bottom of the pile.



This is due partly to the fact that many professionals, opinion makers, communications media and centres of power, being located in affluent urban areas, are far removed from the poor, with little direct contact with their problems. ... This lack of physical contact and encounter, encouraged at times by the disintegration of our cities, can lead to a numbing of conscience and to tendentious analyses which neglect parts of reality.

At times this attitude exists side by side with a “green” rhetoric.

Today, however, we have to realize that a true ecological approach *always* becomes a social approach; it must integrate questions of justice in debates on the environment, so as to hear *both the cry of the earth and the cry of the poor*.



Reflection

What strikes you? What resonates? What stays with you?

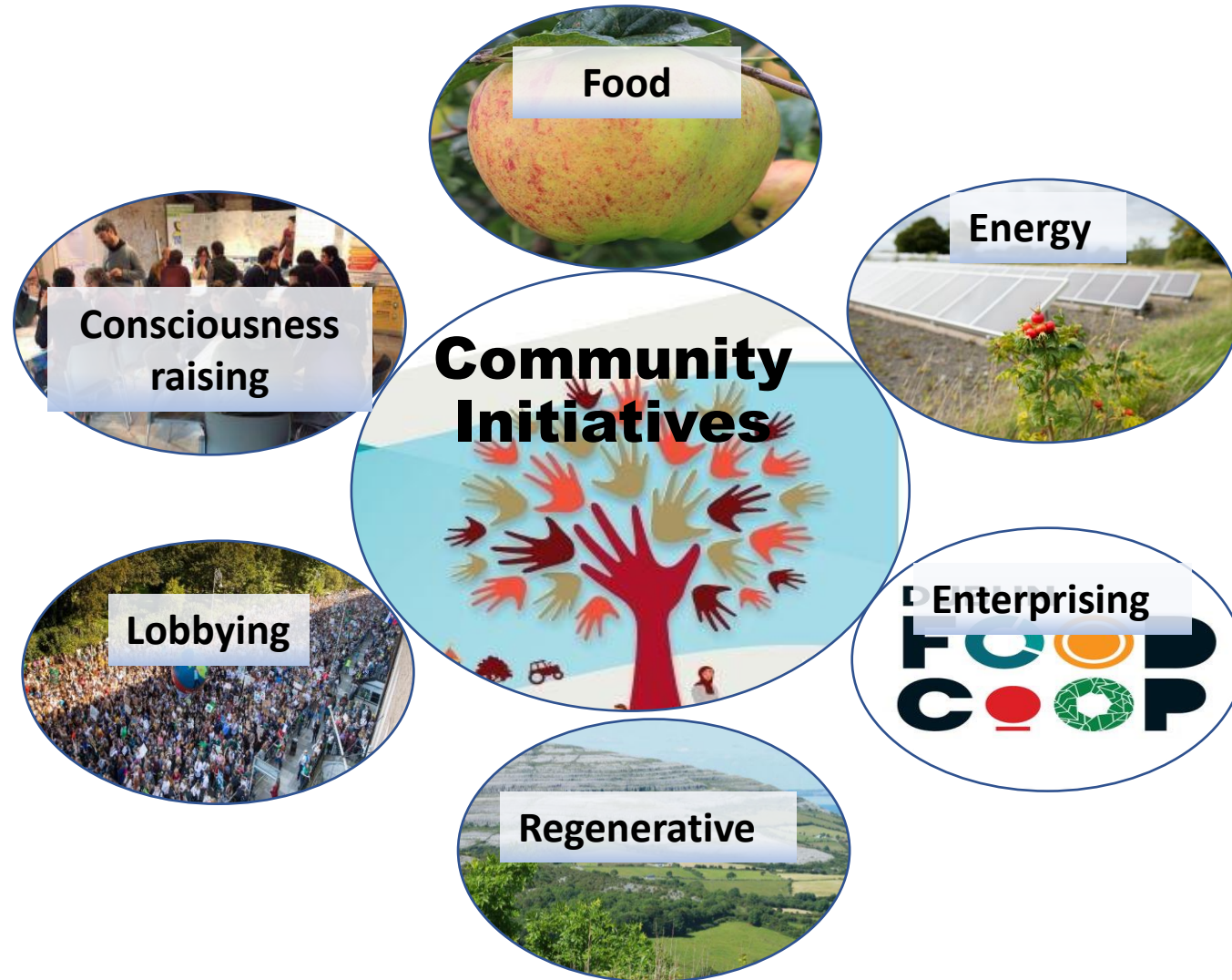
What is the role of a (faith) leader
in reflecting on climate and social justice?

What are good questions for leaders to be asking of
themselves and of the world,
on behalf of their (faith) communities?

Our Common Home – Looking at the connections

Jesuit Centre for Faith and Justice
54-72 Gardiner Street Upper, Dublin 1

Communities: Environmental Justice

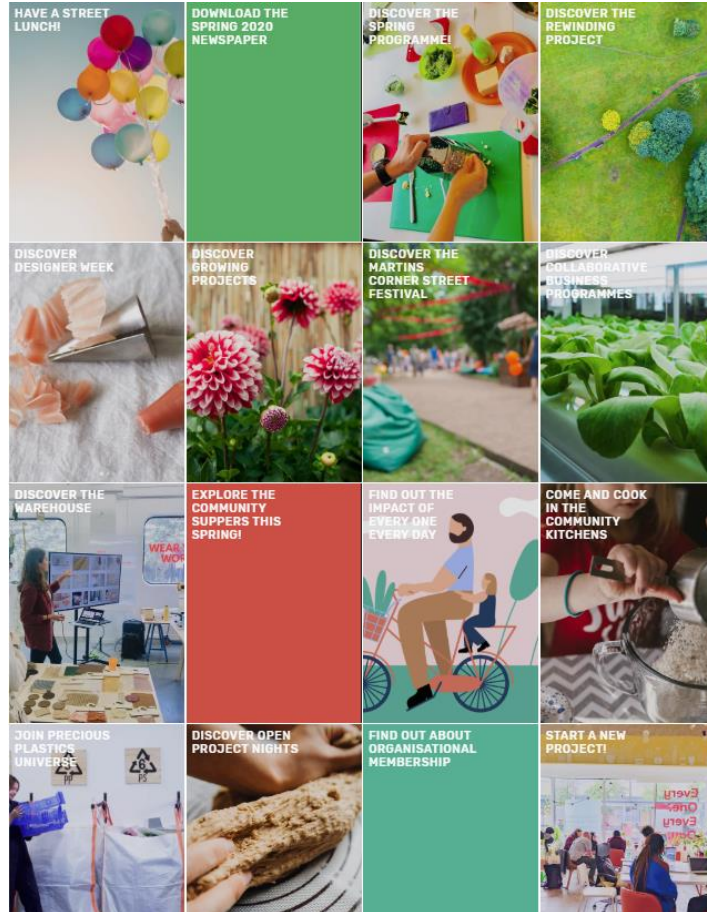


Communities: Environmental Justice

- **Hardwicke Street Community garden**



Communities: Environmental Justice



- Hardwick Street Community garden
- **Every One Every Day**
 - Participatory Cities Initiative
 - London

Communities: Environmental Justice

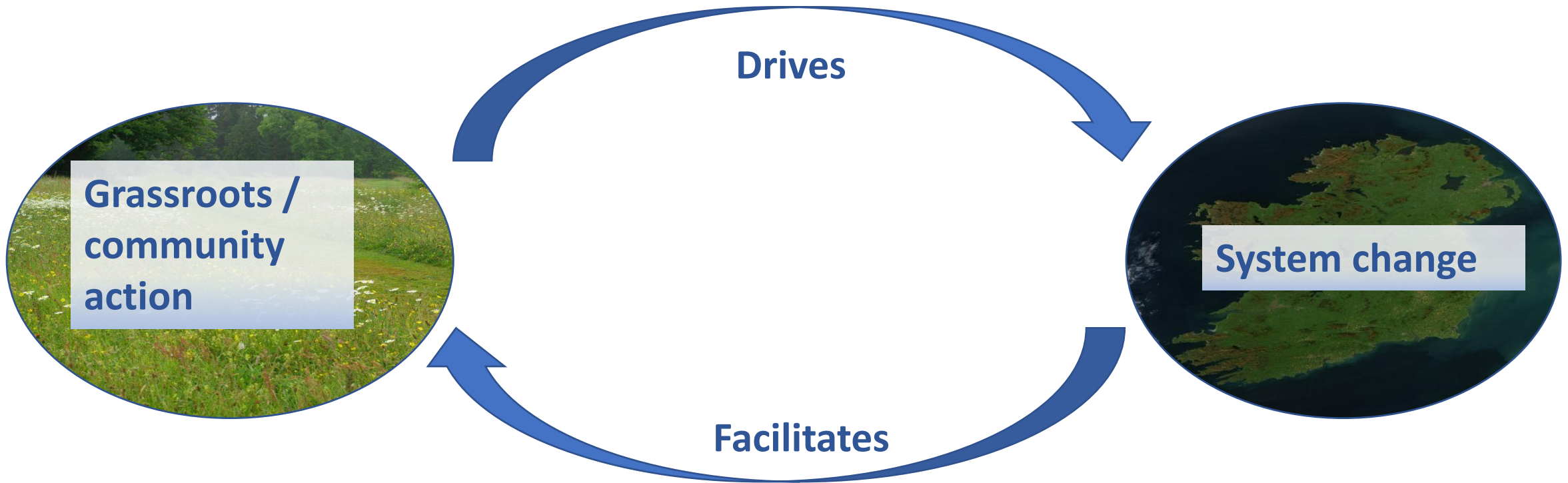


- Hardwick Street Community garden
- Every One Every Day
 - Participatory Cities Initiative
 - London
- **Ballymun Community Farm**

Communities: Environmental Justice



Systemic v Grassroots change





Beyond A Throwaway Culture:

Finding Good Eco-Questions
for our Faith Communities

Saturday, February 29th 2020

Afternoon



1:00	Lunch
2:00	Resources and ideas
3:30	Bringing it all together
4:15	Prayer Moment

Frank Greally, Nadine Cunningham, Brenda Farrell

Handouts by email after the event.

Workshops

Resource: Bio-diversity Ireland: Faith Communities booklet

An opportunity to explore possibilities for your community... 40 mins

- The Daily Mile with Frank Greally THPY RM
- Finding the Spiritual in a Nature Walk with Brenda Farrell SAC SP
- How we created a biodiversity garden - Nadine Cunningham HERE

Evaluation

What questions have emerged for you today?

What are you taking home?

Where can you see hope?

What advice would you offer future conference planning groups?



A Closing Prayer As We Go Out Together



Beyond A Throwaway Culture:

Finding Good Eco-Questions
for our Faith Communities

Saturday, February 29th 2020